

PDCL3 Antibody (N-term)
Affinity Purified Rabbit Polyclonal Antibody (Pab)
Catalog # AP13347a

Specification

PDCL3 Antibody (N-term) - Product Information

Application	WB,E
Primary Accession	O9H2J4
Other Accession	NP_076970.1
Reactivity	Human
Host	Rabbit
Clonality	Polyclonal
Isotype	Rabbit IgG
Calculated MW	27614
Antigen Region	39-68

PDCL3 Antibody (N-term) - Additional Information

Gene ID 79031

Other Names

Phosducin-like protein 3, HTPHLP, PhPL3, Viral IAP-associated factor 1, VIAF-1, PDCL3, PhLP2A, VIAF1

Target/Specificity

This PDCL3 antibody is generated from rabbits immunized with a KLH conjugated synthetic peptide between 39-68 amino acids from the N-terminal region of human PDCL3.

Dilution

WB~~1:1000

E~~Use at an assay dependent concentration.

Format

Purified polyclonal antibody supplied in PBS with 0.09% (W/V) sodium azide. This antibody is purified through a protein A column, followed by peptide affinity purification.

Storage

Maintain refrigerated at 2-8°C for up to 2 weeks. For long term storage store at -20°C in small aliquots to prevent freeze-thaw cycles.

Precautions

PDCL3 Antibody (N-term) is for research use only and not for use in diagnostic or therapeutic procedures.

PDCL3 Antibody (N-term) - Protein Information

Name PDCL3

Synonyms PhLP2A, VIAF1

Function Acts as a chaperone for the angiogenic VEGF receptor KDR/VEGFR2, increasing its abundance by inhibiting its ubiquitination and degradation (PubMed:[23792958](#), PubMed:[26059764](#)). Inhibits the folding activity of the chaperonin-containing T-complex (CCT) which leads to inhibition of cytoskeletal actin folding (PubMed:[17429077](#)). Acts as a chaperone during heat shock alongside HSP90 and HSP40/70 chaperone complexes (By similarity). Modulates the activation of caspases during apoptosis (PubMed:[15371430](#)).

Cellular Location

Cytoplasm. Cytoplasm, perinuclear region. Endoplasmic reticulum

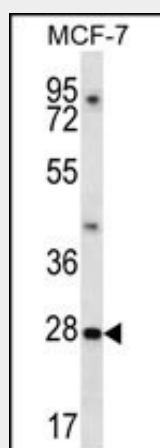
Tissue Location

Expressed in endothelial cells (at protein level) (PubMed:26059764). Expressed in all tissues examined including spleen, thymus, prostate, testis, ovary, small intestine and colon (PubMed:15371430).

PDCL3 Antibody (N-term) - Protocols

Provided below are standard protocols that you may find useful for product applications.

- [Western Blot](#)
- [Blocking Peptides](#)
- [Dot Blot](#)
- [Immunohistochemistry](#)
- [Immunofluorescence](#)
- [Immunoprecipitation](#)
- [Flow Cytometry](#)
- [Cell Culture](#)

PDCL3 Antibody (N-term) - Images

PDCL3 Antibody (N-term) (Cat. #AP13347a) western blot analysis in MCF-7 cell line lysates (35ug/lane). This demonstrates the PDCL3 antibody detected the PDCL3 protein (arrow).

PDCL3 Antibody (N-term) - Background

This gene encodes a member of the phosducin-like protein family and is a putative modulator of heterotrimeric G proteins. The protein shares extensive amino acid sequence homology with

phosducin. Members of the phosducin-like protein family have been shown to bind to the beta-gamma subunits of G proteins. [provided by RefSeq].

PDCL3 Antibody (N-term) - References

Stirling, P.C., et al. Mol. Biol. Cell 18(6):2336-2345(2007)
Lamesch, P., et al. Genomics 89(3):307-315(2007)
Wilkinson, J.C., et al. J. Biol. Chem. 279(49):51091-51099(2004)
Lopez, P., et al. J. Biol. Chem. 278(3):1751-1757(2003)